

Community First:

RCPs in Service of Community Health, Economy, Education, Revenue, Food, Natural Resources, Jobs, Rejuvenation, and so on, and so on...

Speakers

Lee Dassler

JT Horn

Rev. Stephen Blackmer

Western Foothills Land Trust

Trust for Public Land

Kairos Earth

Church of the Woods

Moderator

Mike Wilson

Northern Forest Center

*“I told the
Northern
Forest Alliance
person at first
that I didn’t
trust him
further than I
could throw
my house.”*

**-Wood Carver,
Maine**



Q: How do we
move from
seeking
community
support for
conservation
to *supporting*
communities
through
conservation





**Northern
Forest Center**
Thriving Communities
& Healthy Forests

**Building economic opportunity and community vitality
from health working forests in the Northern Forest
of Maine, New Hampshire, Vermont and New York.**

Catalyze Innovation in the Forest Economy

Develop Vibrant Rural Communities

Provide Regional Leadership

Maine Conservation Lands Prior to 1997

Legend

- Conservation Easement
- Conservation Fee Ownership



0 25 50 75 Miles

Data Sources:
Forest Society of Maine Statewide Conservation Data
Maine Conserved Lands Database (ME-OGIS)
2005 Forestland Owners (J.W. Sewall Co.)



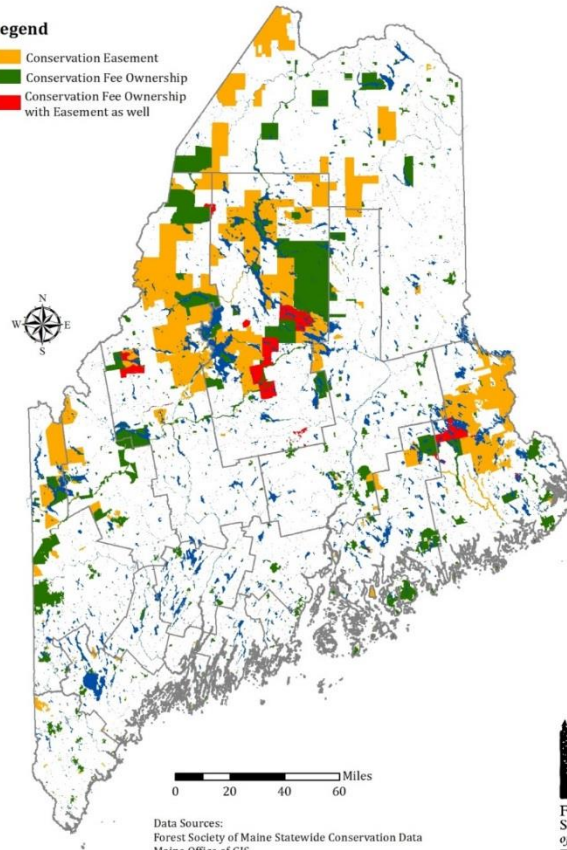
FOREST
SOCIETY
of MAINE

Map: 12/6/2007

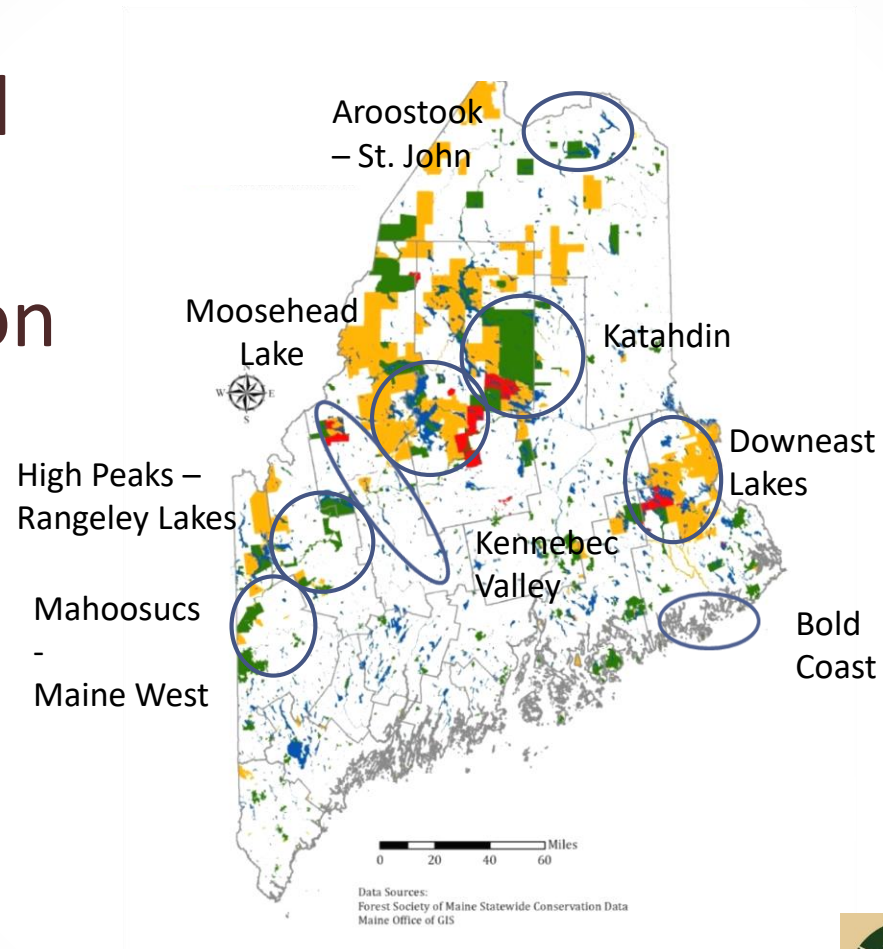
Maine Conservation Lands 2014

Legend

- Conservation Easement
- Conservation Fee Ownership
- Conservation Fee Ownership
with Easement as well



High Potential Rural Destination Areas



Rural Destination Areas

DESIRED OUTCOME:

- Network of marketable Rural Destination Areas
 - Clustered recreational amenities, natural attractions, trail systems, water access
 - Transportation infrastructure
 - Vibrant downtowns
 - Service oriented businesses & communities
- Expanded economic and job opportunities that attract visitors, businesses and new residents

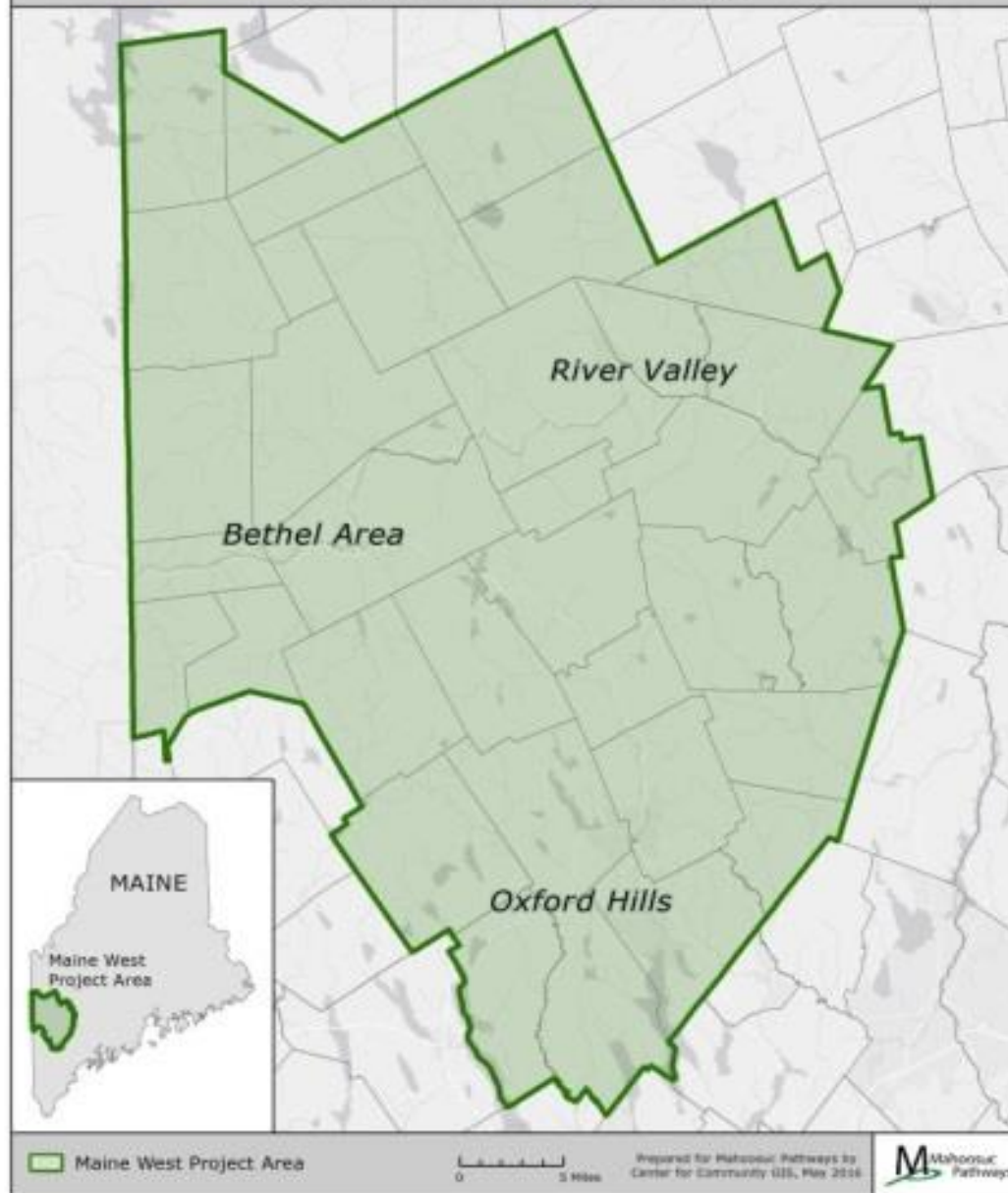


Maine West



Maine West

This concept map is for discussion purposes only.





Oxford County Wellness Collaborative



**Northern
Forest Center**
Thriving Communities
& Healthy Forests



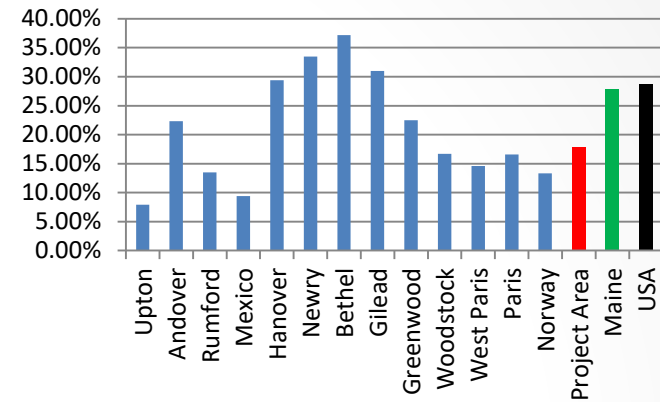
outdoors.org



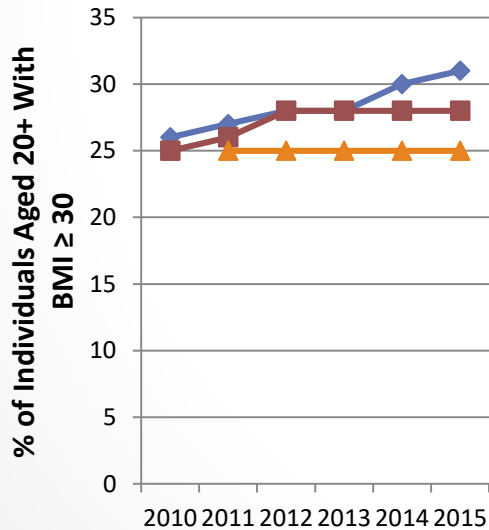
- ❖ Cathy Newell (at large/ Adult Ed)
- ❖ Steve Wight (at large)



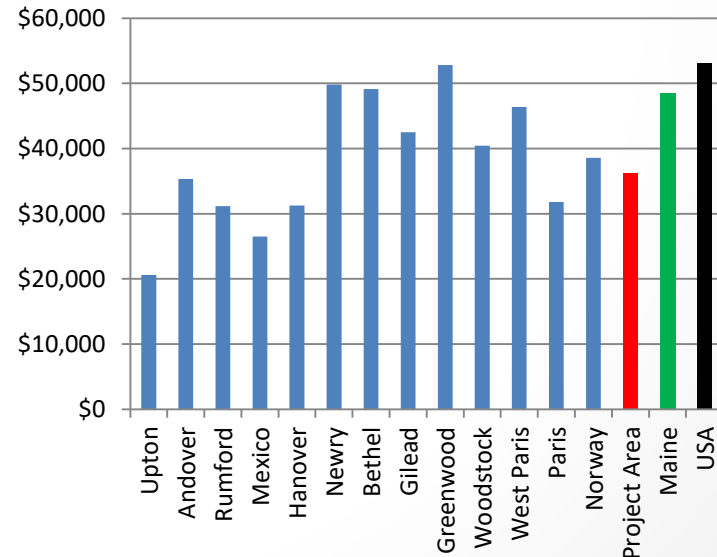
Bachelors Degrees (25 up)



Adult Obesity



Median Household Income





Mission & Focal Areas:

Address systemic rural challenges and enhance community well-being in western Maine through increased collaboration across the economic, education, health and conservation sectors.

Current Focal Areas:

- Active Communities
- Broadband Access & Adoption
- Educational Attainment & Aspirations




Active Communities



SECOND NATURE
Adventure Challenge

 My Profile / Badges

 Sign Out

[The Challenge](#)

[The Trails](#)

[The Adventurers](#)

[Learn More](#)



ADVENTURE AWAITS
Explore Maine West





Active Communities

Step
1



Familiarize yourself with The Trails that make up the Challenge.

- The **nine trails** are located in three different **Regions** to encourage exploration throughout **Maine West**.
- There are easy, moderate, and strenuous trail options that are suitable for hikers of all abilities.
- Choose the trail you want to do first...second...third...!

Step
2



Create a user account to track trails and earn Badges.

- **Register** for a free user account and personalize your profile.
- Meet some of **The Adventurers** that have already created accounts, logged trails, and earned badges.
- User accounts are only required if you want to earn badges. If you don't want to register, you can still use this website as a way to connect to area trails.

Step
3



Get ready to hit the trail.

- Know where you are going and what to expect.
- Each detailed **trail page** provides an overview of what to expect with a link to a trail map on **Maine Trail Finder** and driving directions to the trailhead.
- Review the helpful **Trail Tips** to make sure you're prepared.

Step
4



Go take a hike!

- This is the best part!

Maine West Broadband Planning Community Survey Results



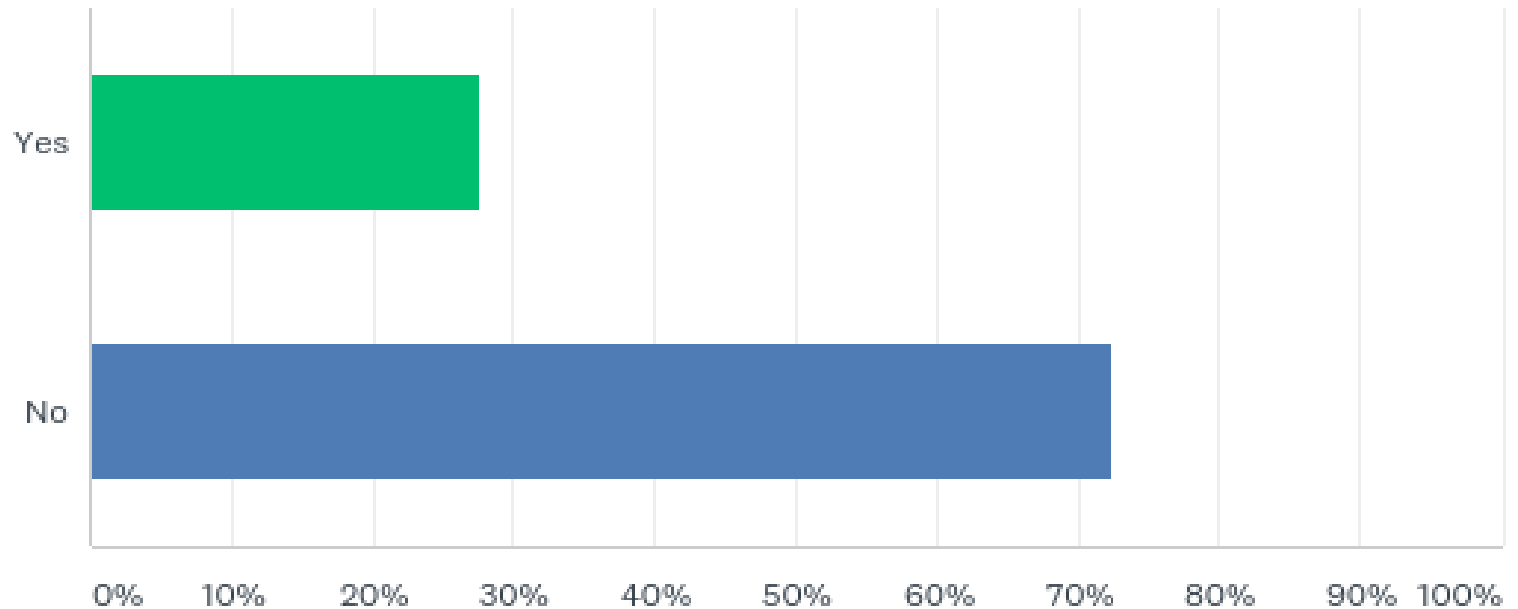
354 RESPONSES
30 PLUS COMMUNITIES



Q6: Are you happy with your current internet service?



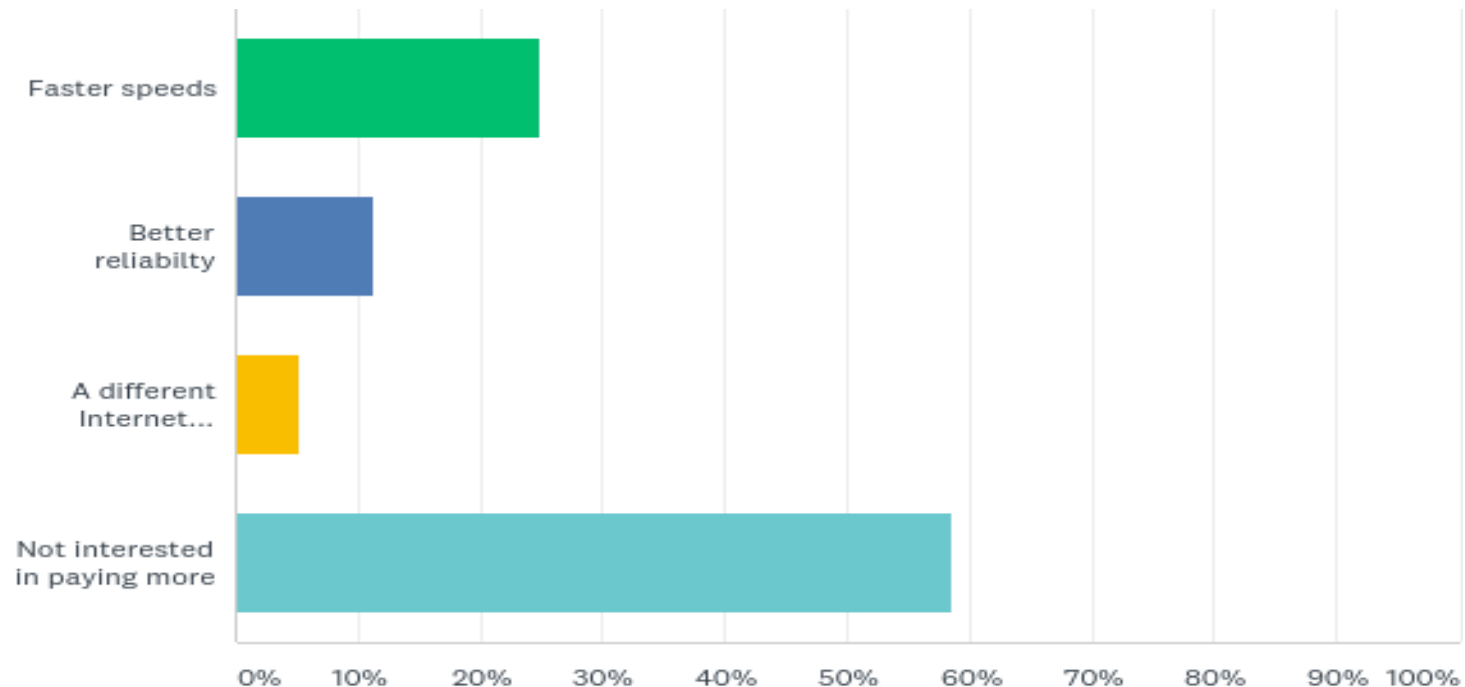
- Answered: 345 Skipped: 9



Q8: Would you be interested in paying more for one of the following?



- Answered: 345 Skipped: 9



Educational Attainment & Aspirations



Maine
West





Addressing systemic rural challenges and enhancing community well-being in western Maine through increased collaboration across the economic, education, health and conservation sectors.

- *Active Communities*
- *Broadband Access & Adoption*
- *Educational Attainment & Aspirations*

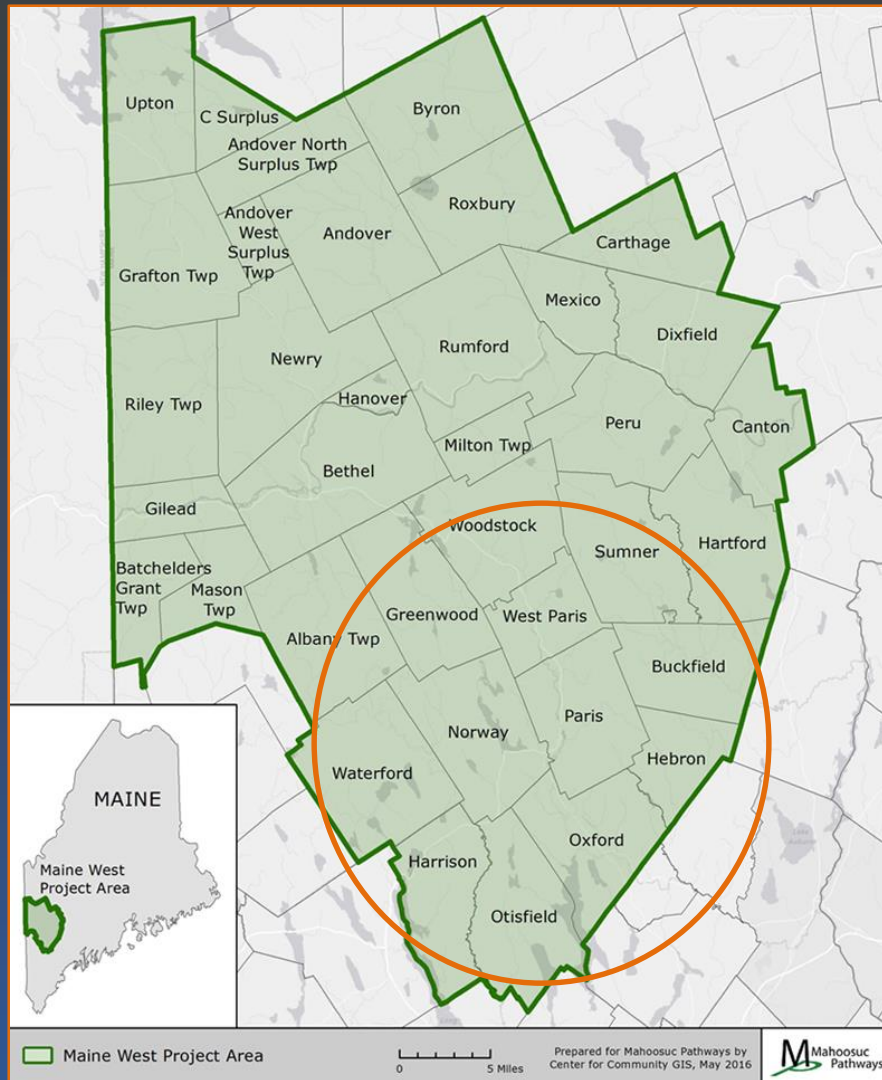


Western Foothills Land Trust

Dedicated to the conservation and protection of native ecosystems, farm and forestlands, watersheds, and scenic landscapes for the benefit of wild and human communities in western Maine.



Western Foothills Land Trust is dedicated to the conservation and protection of native ecosystems, farm and forestlands, watersheds, and scenic landscapes for the benefit of wild and human communities in Western Maine..



- WFLT holds 31 conservation easements protecting 4,190 acres
- WFLT owns 20 parcels protecting 3,115 acres
 - 86 acres in Open Space
 - 1014 acres Tree Growth
 - 1793 acres Tax Exempt
 - 226 acres Payment-in-Lieu-of-Taxes
- 2017 total property taxes paid: \$3971
- \$446 to State of Maine Forestry Tax
- We own 6 Preserves featuring 25 miles of trails and recreational or cultural assets.



Witt Swamp Preserve- 252 acres





Shepard's Farm Preserve





Virgil Parris Forest- 1250 acres





Full Moon Snowshoe



View of Noyes from Norway Lake

Noyes Mountain Preserve- 295 acres



Fields with views of Streaked and Singepole Mountains



Eclipse 2017



Hatch Preserve at Hawk Mountain





© Jesse Cottingham



© Jesse Cottingham

USAT sanctioned event, Norway Triathlon



© Jesse Cottingham



© Jesse Cottingham



Roberts Farm Preserve, Norway
 165 acres- 16k trails
 Land purchased in 2008.
 Trail system completed in 2012,
 Warming hut in 2013.





Norway Maine Snowshoe Festival February 2017



Western Foothills Land Trust wflmaine.org







Jackie Lemieux, a Mellie Dunham descendant, running the snowshoe 10k



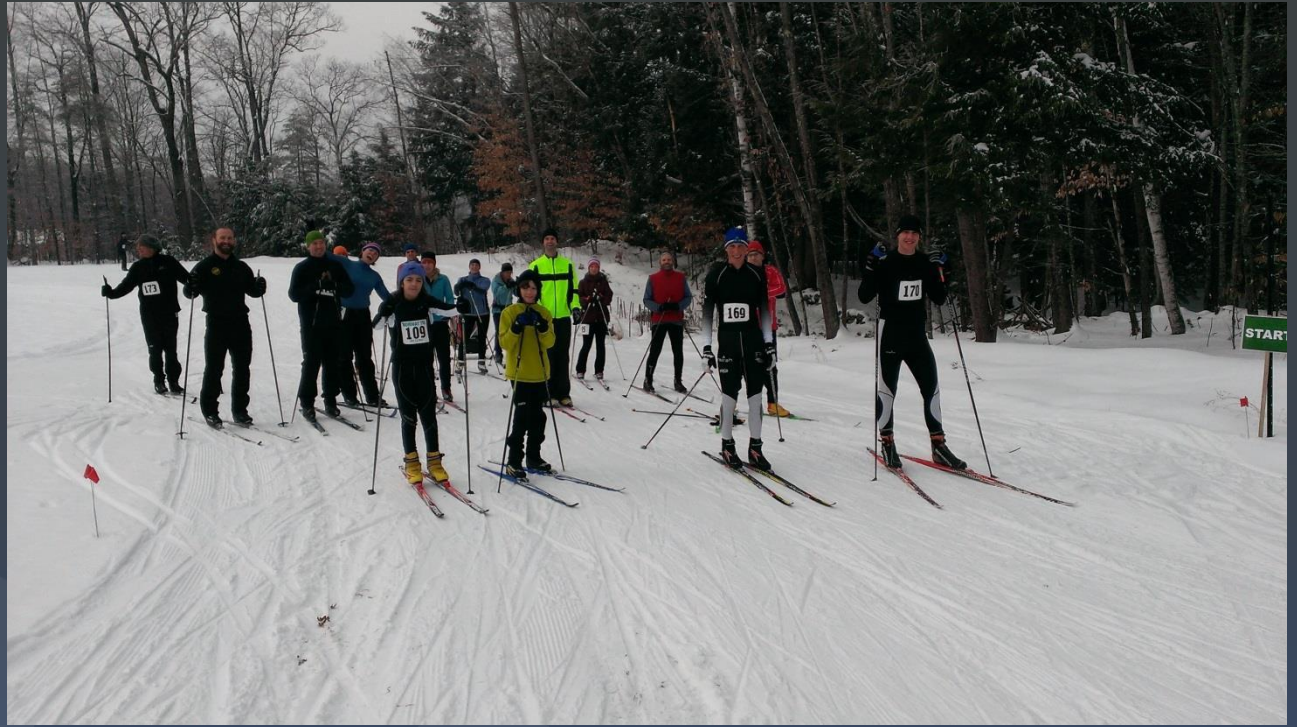
Dryland and Mountain Bike Biathlons

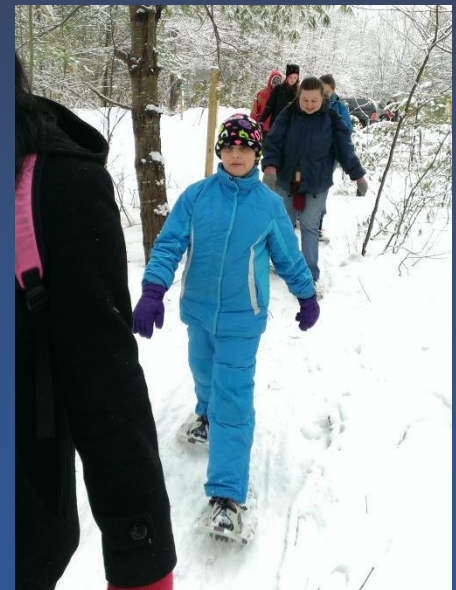




Monthly biathlons with Southern Maine Biathlon Club

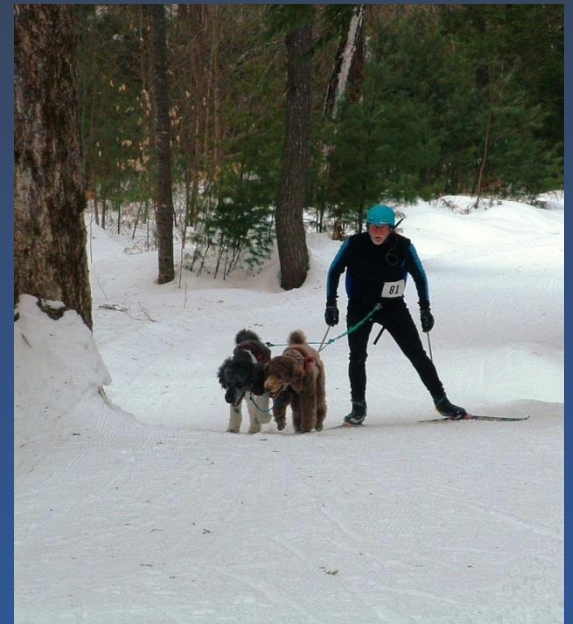








Our first Skijor at
Roberts Farm
Preserve





Programs and Groups we serve: after school ski program, Lots to Gardens and Cultivating Community, Baxter School for the Deaf, Maine Adaptive Sports, Home-schoolers





WALK



SHOE



SKI



VIEW

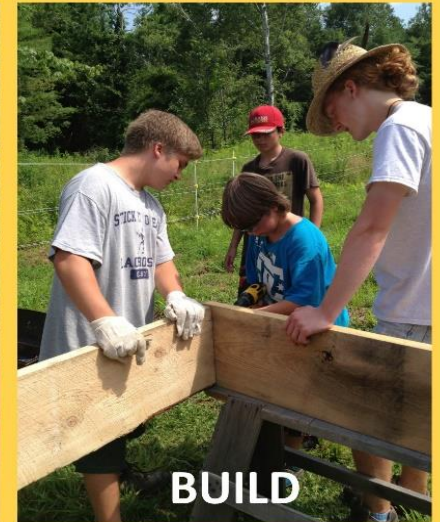
Roberts Farm Preserve

Norway Maine

Western Foothills Land Trust www.wftmaine.org



SOW



BUILD



GROW



THRILLED

Roberts Farm Garden-to-School

Norway Maine

A collaboration between the Oxford Hills School District and the Western Foothills Land Trust

www.wftmaine.org

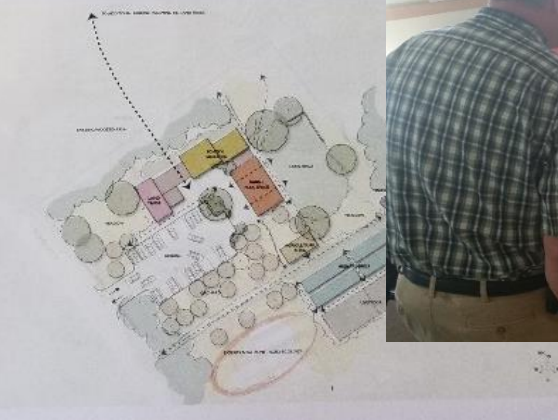
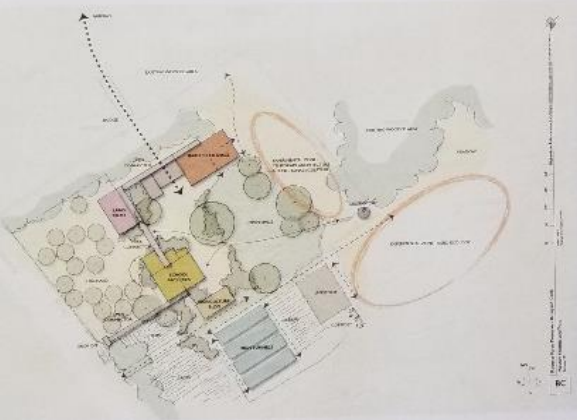


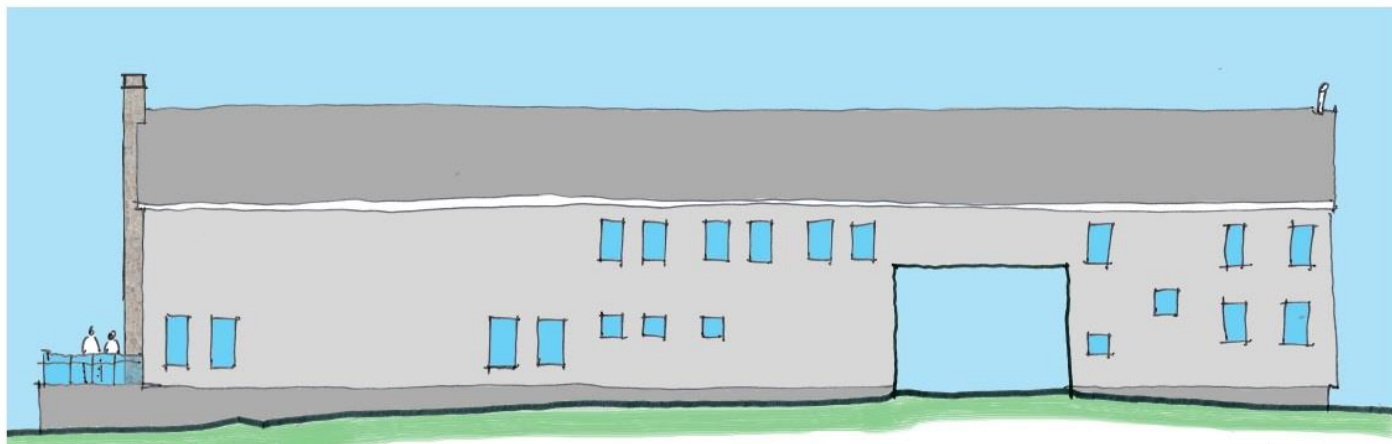
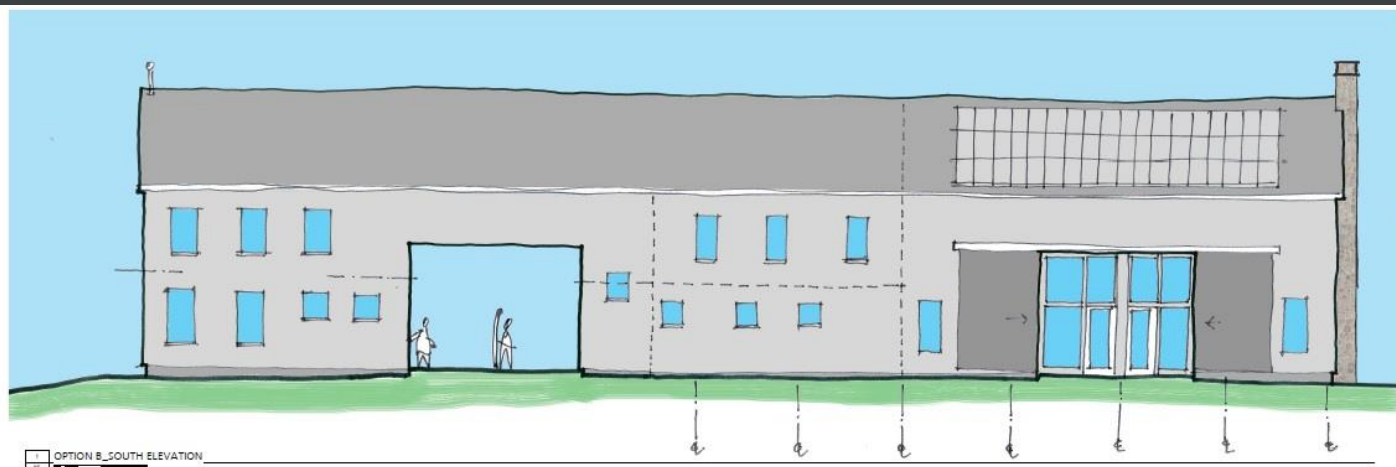
Roberts Farm Garden to School

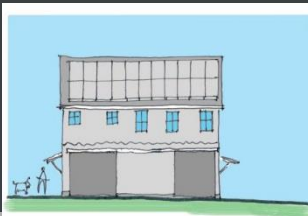
Big Vision for the Future of Roberts Farm



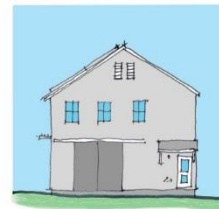
Biodiversity Energizing
Welcoming
Accessible Inspiring
Beautiful Elegant
Edgy Inclusive
Rustic Dirty
Visionary Productive
Understandable
Organized Integrated
Planned- directed
Fun Clear Goals
Resonant
Creative
Refuge







OPTION A SOUTH ELEVATION



OPTION A EAST ELEVATION



OPTION A NORTH ELEVATION



OPTION A WEST ELEVATION



OPTION B SOUTH ELEVATION



OPTION B EAST ELEVATION



OPTION B NORTH ELEVATION

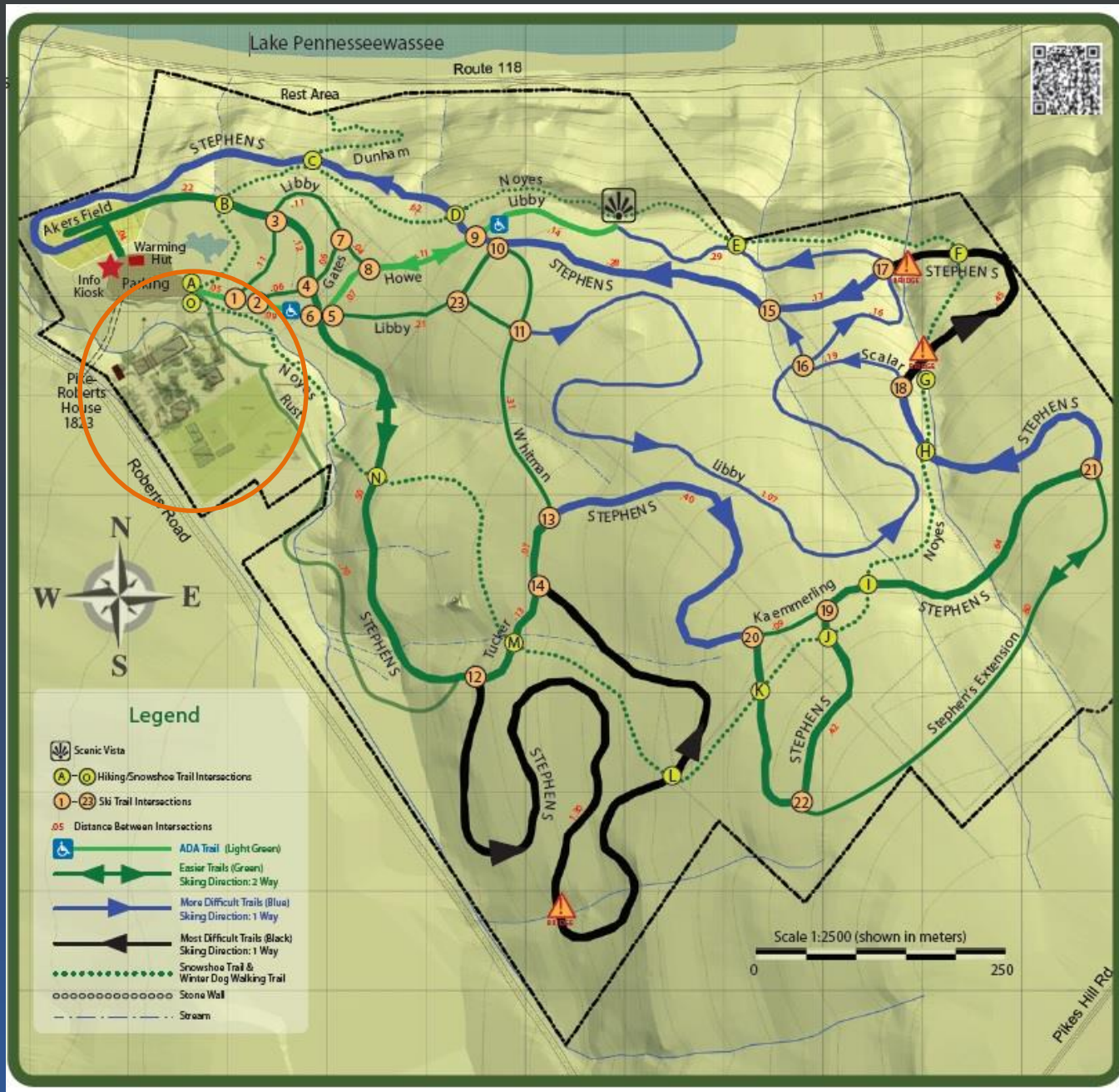


OPTION B WEST ELEVATION









Conservation as Community Investment

J.T. Horn, Senior Project Manager



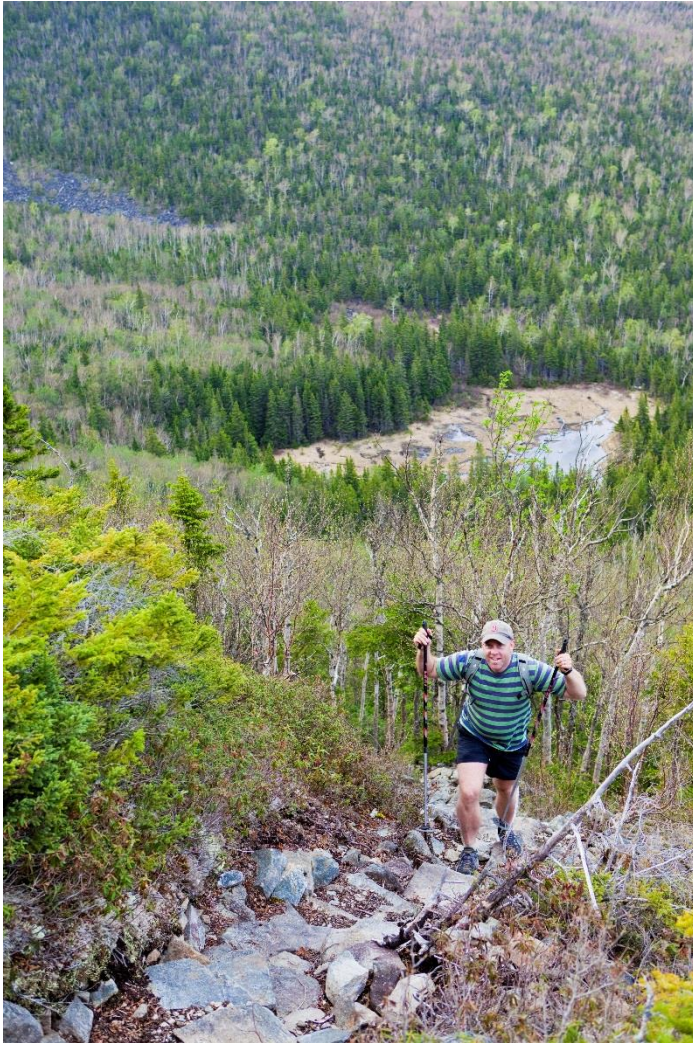
Community Engagement

- We have identified that the Smith Property is important to us. Please support us in conserving it.

Versus

- What are your community needs?
- Where are your special places?
- What is your economic outlook and how does land and water fit into that?
- Here are our skills. Can we help you meet your goals?

Trust for Public Land – Core Services



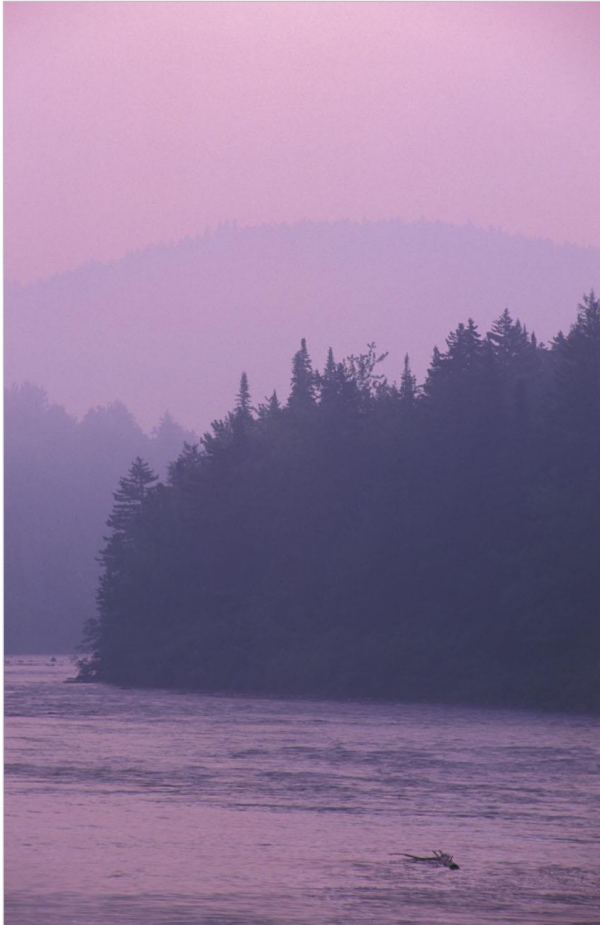
- **PLAN**
- **FUND**
- **PROTECT**
- **CREATE**

Origin Story: Opportunistic vs. Strategic



- A community will rally around a threatened parcel.
- Thoughtful planning can lead to identifying a supportive community, a special place, a willing seller, and funding

Community Forests – Definition



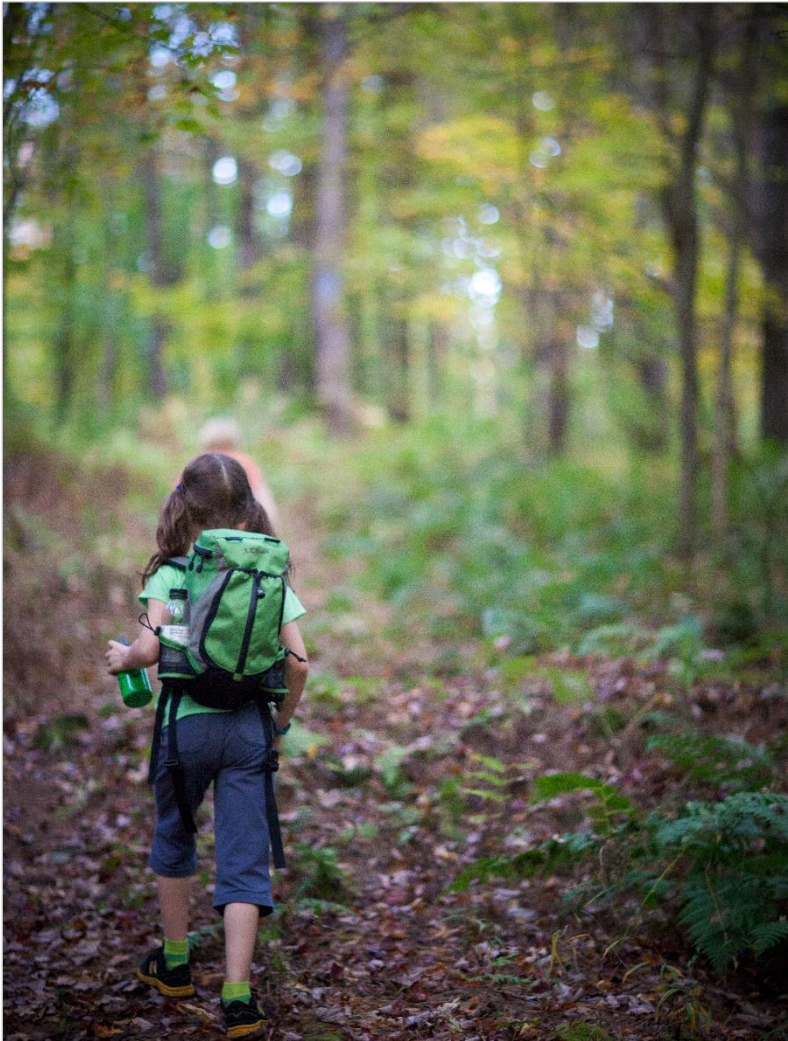
1. Community ownership
2. Community participation in management decisions
3. Benefits – monetary & non-monetary flow back to the community
4. Permanent protection

Community Forest Characteristics



- The project matches the community values
- The project matches the land values
- Recreational assets
- Timber assets
- Water assets

Community Forest Outcomes



Bring communities together

- Old timer vs. newcomer
- Working class vs. white collar
- Fiscal conservative vs. protect at all costs
- Hunter, fishermen, snowmobiler vs. hiker, naturalist, bird watcher
- Everyone wants clean drinking water, wildlife habitat, and outdoor recreation
- People fight over ATV, mountain bikes, hunting, timber, taxes
- Emphasize common ground

Community Futures



- Structured model of community engagement
- Piloted by TPL in Intermountain West
- Based on New England Community Forest work
- Based on urban park experiences with collaborative design

Community Futures



- **BUILDING** community spirit and civic infrastructure
- **EMPOWERING** residents and partners to learn and share protection strategies
- **ADDRESSING** community-driven priorities for recreation, working lands, cultural heritage, etc.
- **INCREASING** conservation of irreplaceable assets

Community Futures – Process Overview

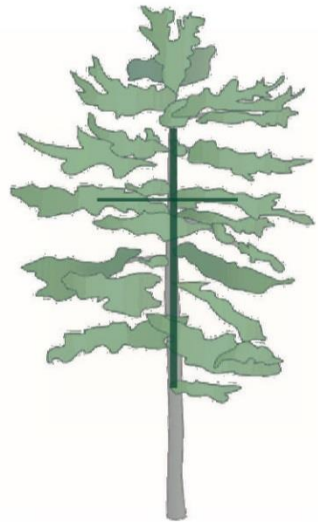


1. Background research on demographics, economy, natural assets
2. Introduce TPL
3. Run an application process
4. Assess local leadership and opportunity
5. Community Discovery Process (4 meetings)
6. Pick strategic initiatives
7. Get to work

Lessons Learned



- Ascutney rope tow rule (create social capital)
- 13-Mile Woods
\$100,000 surplus rule (revenue that benefits the community makes everything easier)
- Barre \$1 million mountain bike rule. (Do an economic study)
- Hanover trumps federal rule (federal funds work best serving local goals)



KAIROS EARTH

Church of the Woods



Thank You!

www.northernforest.org

www.wfltmaine.org

www.mainewest.org

www.tpl.org

www.kairosearth.org

